



MSR Gold™ SA Double Ended – for extended performance

MSR Gold™ SA Double Ended

To optimize the total lifetime of the double ended MSR Gold™ SA Double Ended lamps, the caps are plated with gold. This provides superior heat protection and thereby minimizes premature failure of the lamp and lamp holder, as well as ensuring extended consistent performance. In addition, the highly innovative P3 technology, developed by Philips, allows the lamp to be used at higher temperatures, which further extends service life and consistency of high-quality light output.

Benefits

- Enables use at higher temperatures in any burning position. Longer lifetime, fewer early failures, consistent performance over time
- Pure, white light; color point close to black body line. Consistent color impression over MSR Range
- Reduces early lamp or lamp holder failures

Features

- Philips Pinch Protection
- MSR filling
- Gold plated lamp caps

Application

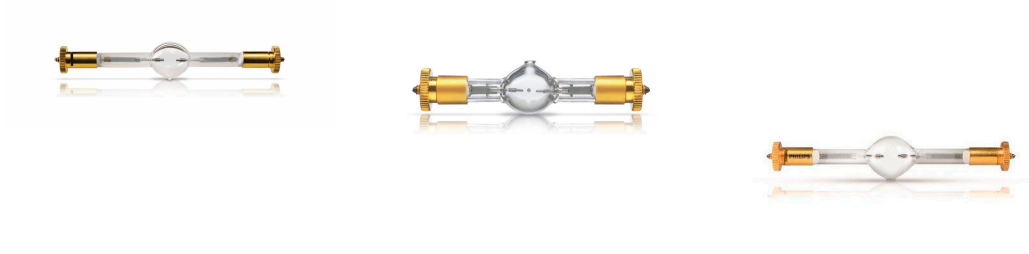
- Entertainment

MSR Gold™ SA Double Ended

Warnings and Safety

- A lamp breaking is extremely unlikely to have any impact on your health. If a lamp breaks, ventilate the room for 30 minutes and remove the parts, preferably with gloves. Put them in a sealed plastic bag and take it to your local waste facilities for recycling. Do not use a vacuum cleaner.
- Lamp contains mercury.
- Manage in Accord with Disposal Laws.
- See: www.lamprecycle.org or 1-800-555-0050

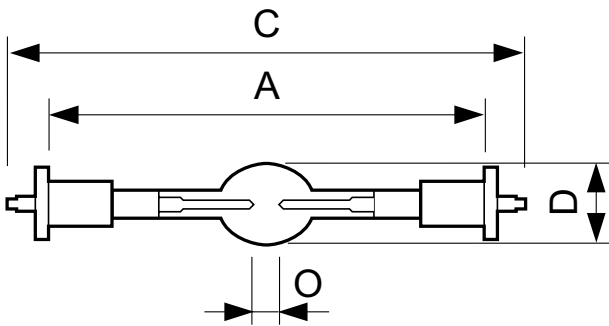
Versions



MSR Gold™ SA/(2) DE

MSR Gold™ 575 SA/2 DE

Dimensional drawing



Product	D (max)	O	A (min)	A (max)	A	C (max)
MSR Gold™ 1200 SA/DE 1CT/4	7/8 in	5/16 in	4-1/2 in	4-9/16 in	4-9/16 in	5-3/8 in
MSR Gold™ 700 SA/2 DE 1CT/4	3/4 in	3/16 in	4-1/2 in	4-9/16 in	4-9/16 in	5-3/8 in
MSR Gold™ 575 SA/2 DE 1CT/40	18.5 mm	5.0 mm	69.6 mm	70.4 mm	70 mm	92 mm
MSR Gold™ 1200 SA/2 DE 1CT/4	7/8 in	5/16 in	4-1/2 in	4-9/16 in	4-9/16 in	5-3/8 in
MSR Gold™ 1510 SA/DE UNP/108	15/16 in	5/16 in	4-9/16 in	5-3/8 in		
MSR Gold™ 1510 SA/DE 1CT/4	15/16 in	5/16 in	4-9/16 in	5-3/8 in		
MSR Gold™ 1510 SA/1 DE 1CT/4	4-9/16 in	4-1/2 in	4-9/16 in	5-3/8 in	15/16 in	5/16 in

General information

Life To 50% Failures (Nom)	750 h
Operating Position	Universal

Controls and dimming

Order Code	Full Product Name	Dimmable
287144	MSR Gold™ 1200 SA/DE 1CT/4	No
287136	MSR Gold™ 700 SA/2 DE 1CT/4	No
287250	MSR Gold™ 1200 SA/2 DE 1CT/4	No
207829	MSR GOLD 1510 SA/DE BULK	Yes

Order Code	Full Product Name	Dimmable
287169	MSR Gold™ 1510 SA/DE 1CT/4	Yes
245019	MSR Gold™ 575 SA/2 DE 1CT/40	No
325399	MSR Gold™ 1510 SA/1 DE 1CT/4	Yes

MSR Gold™ SA Double Ended

Operating and electrical

Order Code	Full Product Name	Lamp Current (Nom)	Power (Nom)
287144	MSR Gold™ 1200 SA/DE 1CT/4	13.6 A	1200 W
287136	MSR Gold™ 700 SA/2 DE 1CT/4	11.5 A	700 W
287250	MSR Gold™ 1200 SA/2 DE 1CT/4	13.6 A	1200 W
207829	MSR GOLD 1510 SA/DE BULK	13.5 A	1510 W

Order Code	Full Product Name	Lamp Current (Nom)	Power (Nom)
287169	MSR Gold™ 1510 SA/DE 1CT/4	13.5 A	1510 W
245019	MSR Gold™ 575 SA/2 DE 1CT/40	7 A	575 W
325399	MSR Gold™ 1510 SA/1 DE 1CT/4	13.4 A	1510 W

General information

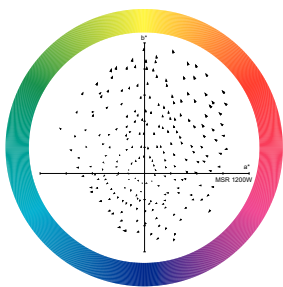
Order Code	Full Product Name	Cap-Base	Main Application	System Description
287144	MSR Gold™ 1200 SA/DE 1CT/4	SFC10-4	Entertainment	SA/DE
287136	MSR Gold™ 700 SA/2 DE 1CT/4	SFC10-4	Studio/Disco	SA/2 DE
287250	MSR Gold™ 1200 SA/2 DE 1CT/4	SFC10-4	Entertainment	SA/2 DE
207829	MSR GOLD 1510 SA/DE BULK	SFC10-4	Entertainment	SA/DE

Order Code	Full Product Name	Cap-Base	Main Application	System Description
287169	MSR Gold™ 1510 SA/DE 1CT/4	SFC10-4	Entertainment	SA/DE
245019	MSR Gold™ 575 SA/2 DE 1CT/40	SFC-11	Entertainment	SA/2 DE
325399	MSR Gold™ 1510 SA/1 DE 1CT/4	SFC10-4	Entertainment	SA/DE

Light technical

Order Code	Full Product Name	Color Code	Correlated Color Temperature (Nom)	Color Rendering Index (Min)	Color Rendering Index (Nom)	Luminous Flux (Min)	Luminous Flux (Nom)
287144	MSR Gold™ 1200 SA/DE 1CT/4	-	6000 K	-	85	92700 lm	103000 lm
287136	MSR Gold™ 700 SA/2 DE 1CT/4	-	7500 K	62	75	43200 lm	48000 lm
287250	MSR Gold™ 1200 SA/2 DE 1CT/4	-	7500 K	-	85	90000 lm	100000 lm
207829	MSR GOLD 1510 SA/DE BULK	-	6000 K	-	85	-	140000 lm
287169	MSR Gold™ 1510 SA/DE 1CT/4	-	6000 K	-	85	-	140000 lm
245019	MSR Gold™ 575 SA/2 DE 1CT/40	2	7500 K	-	75	39000 lm	42000 lm
325399	MSR Gold™ 1510 SA/1 DE 1CT/4	-	5600 K	-	90	-	141000 lm

Color Rendering Diagrams



XDCR_XDMSR_1200W-Colour Rendering
Vector diagram

MSR Gold™ SA Double Ended

